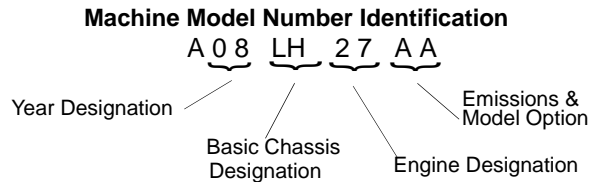


GENERAL INFORMATION

VEHICLE IDENTIFICATION

Model Identification

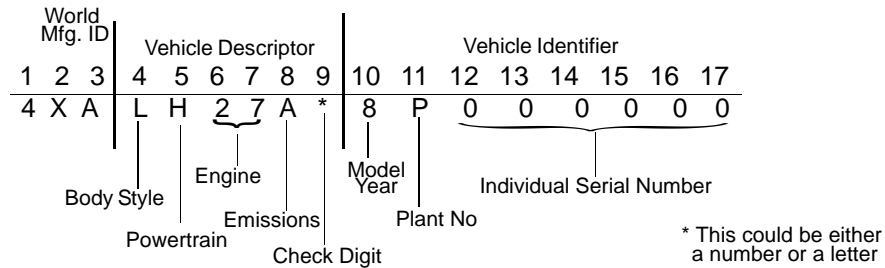
The machine model number must be used with any correspondence regarding warranty or service.



Engine Designation Number

- ES300PFE Single, Air Cooled, SOHC 4 Stroke, Electric Start
- EH460PLE Single, Liquid Cooled, SOHC 4 Stroke, Electric Start

Vehicle Identification Number (VIN)



Vehicle and Engine Serial Number Locations

Whenever corresponding about a Polaris ATV, be sure to refer to the vehicle identification number (VIN) and the engine serial number.

The VIN can be found stamped on the lower frame rail on the front LH side of the ATV (see Figure 1-1).

The engine serial number is stamped on the center top of the crankcase beneath the cylinder and is also located on the sticker applied to the recoil housing on the right side of engine (see Figure 1-2).

